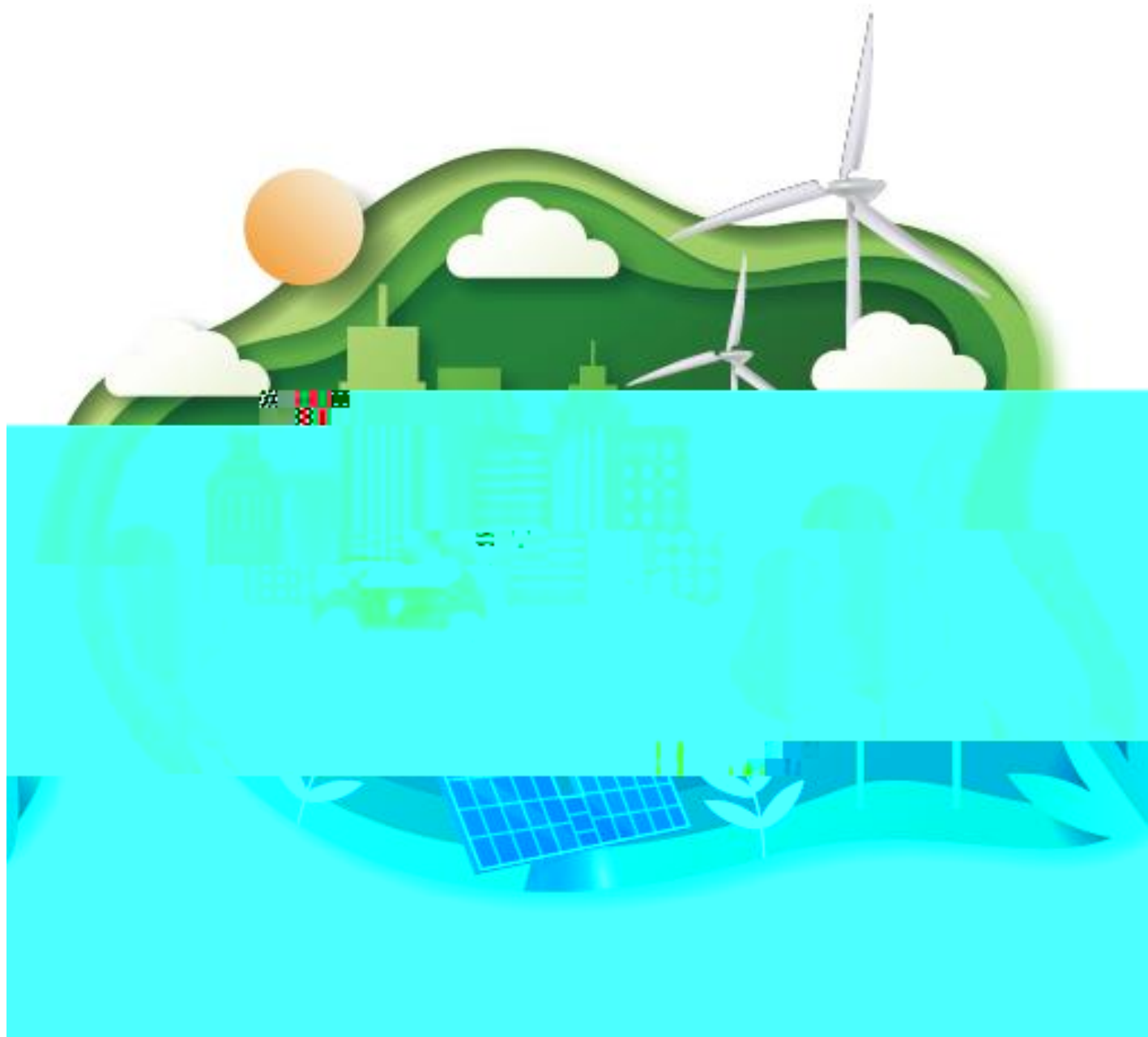


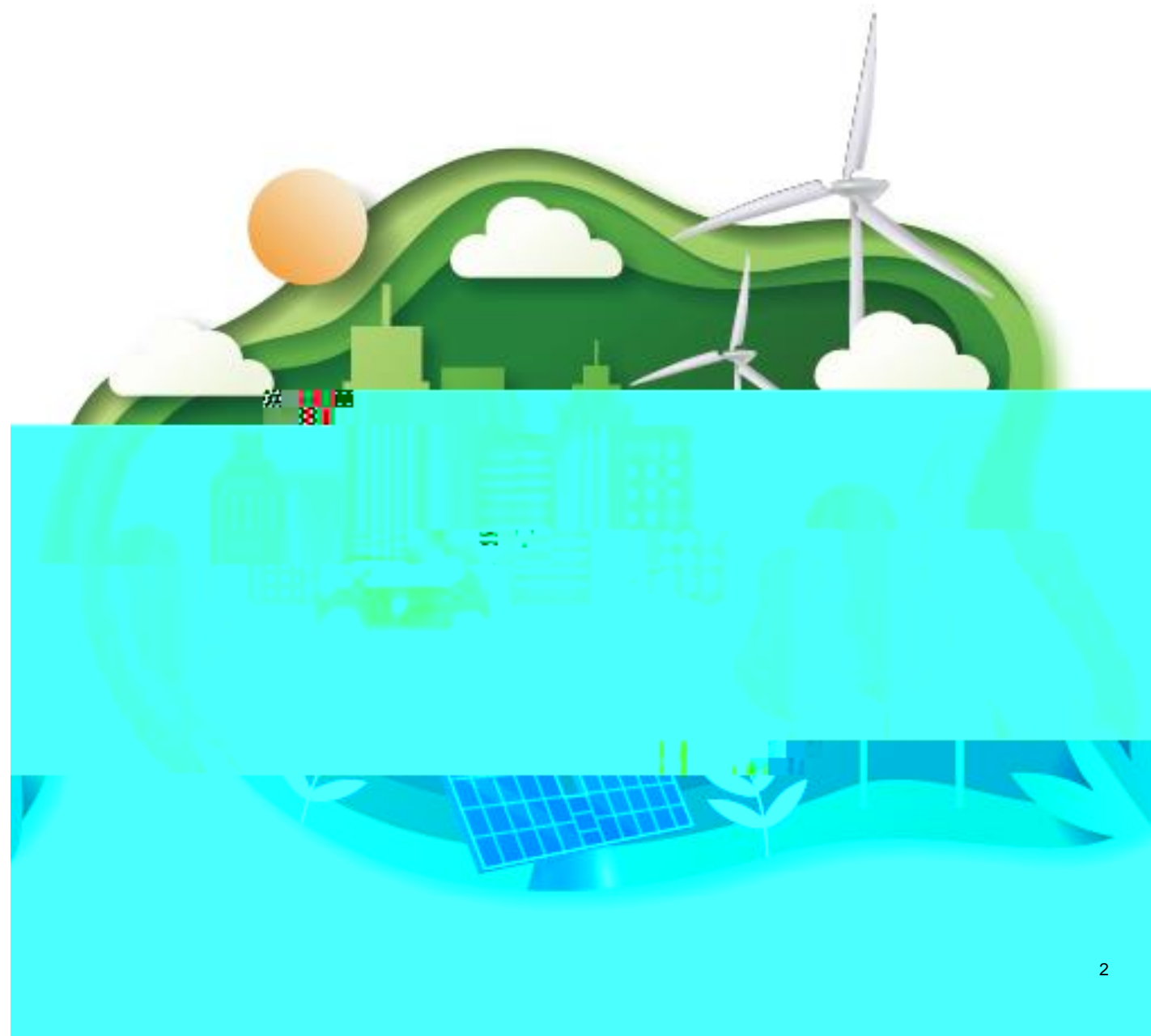
7 □ (

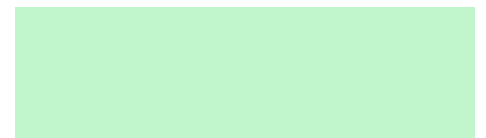
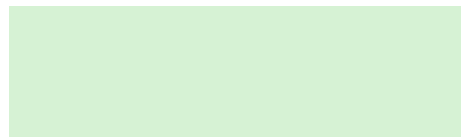
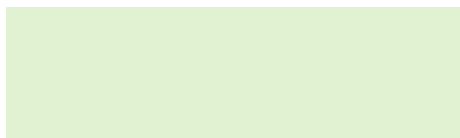
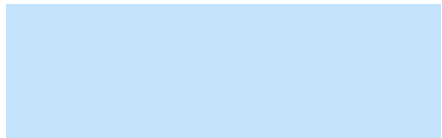
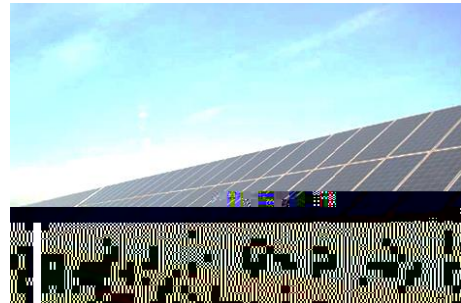
! (

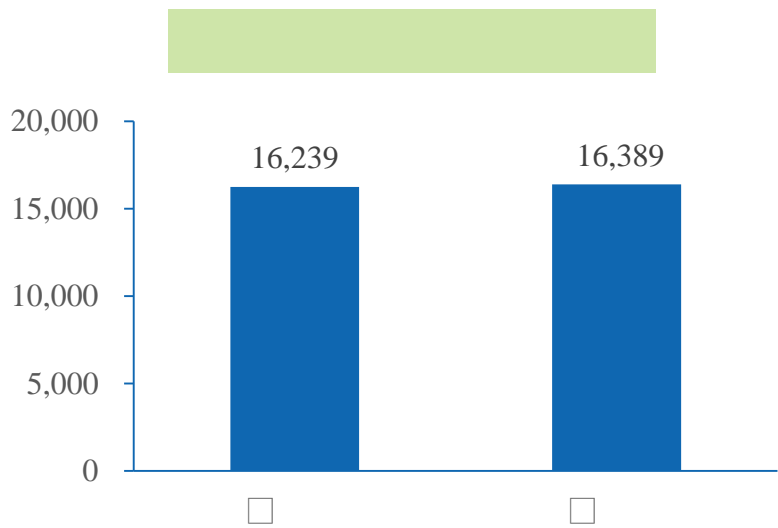
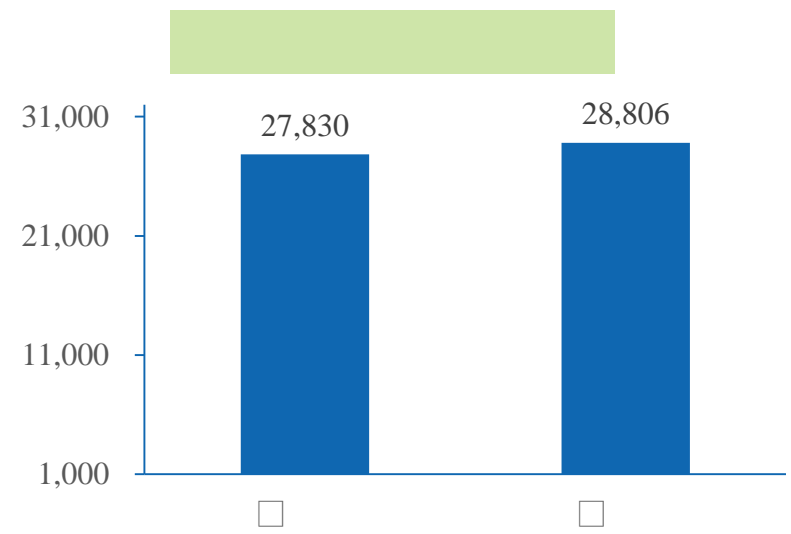
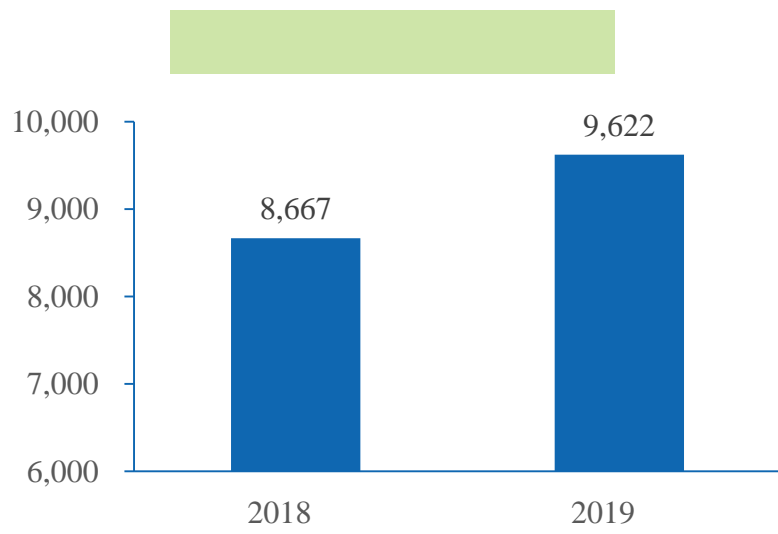
2020 3

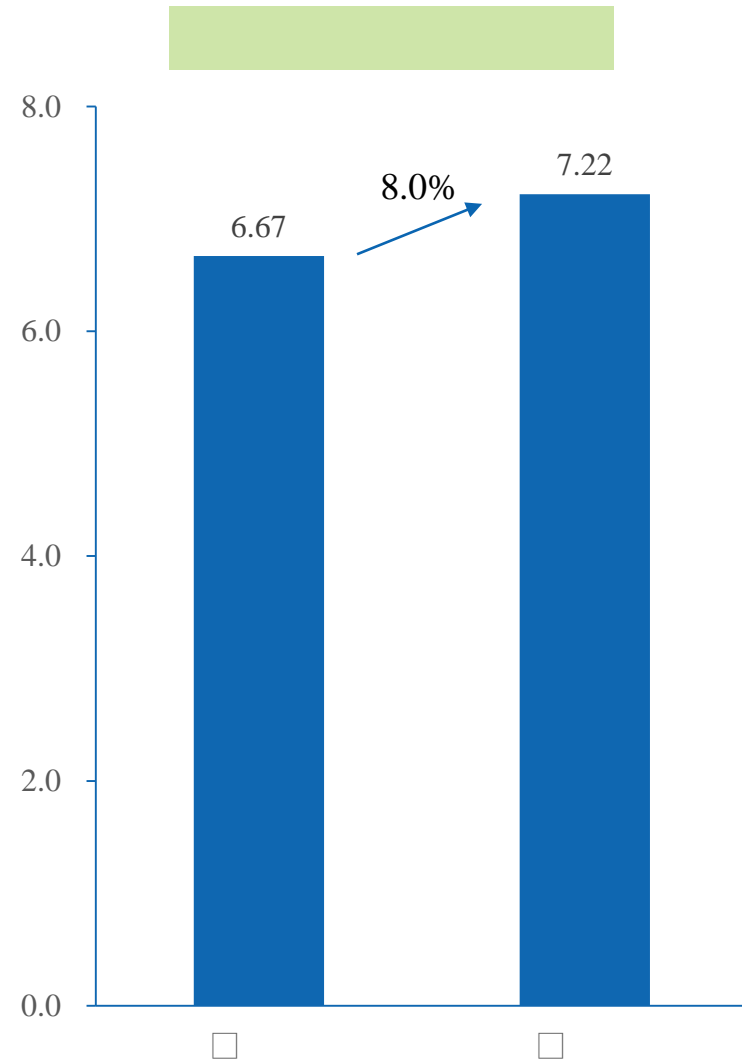
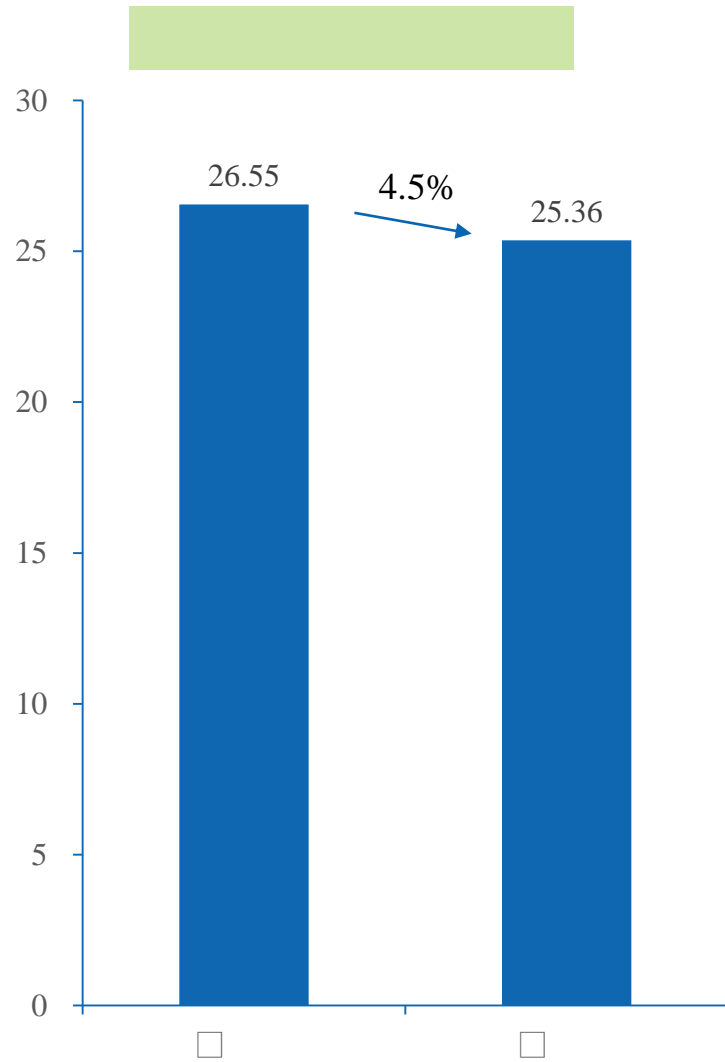


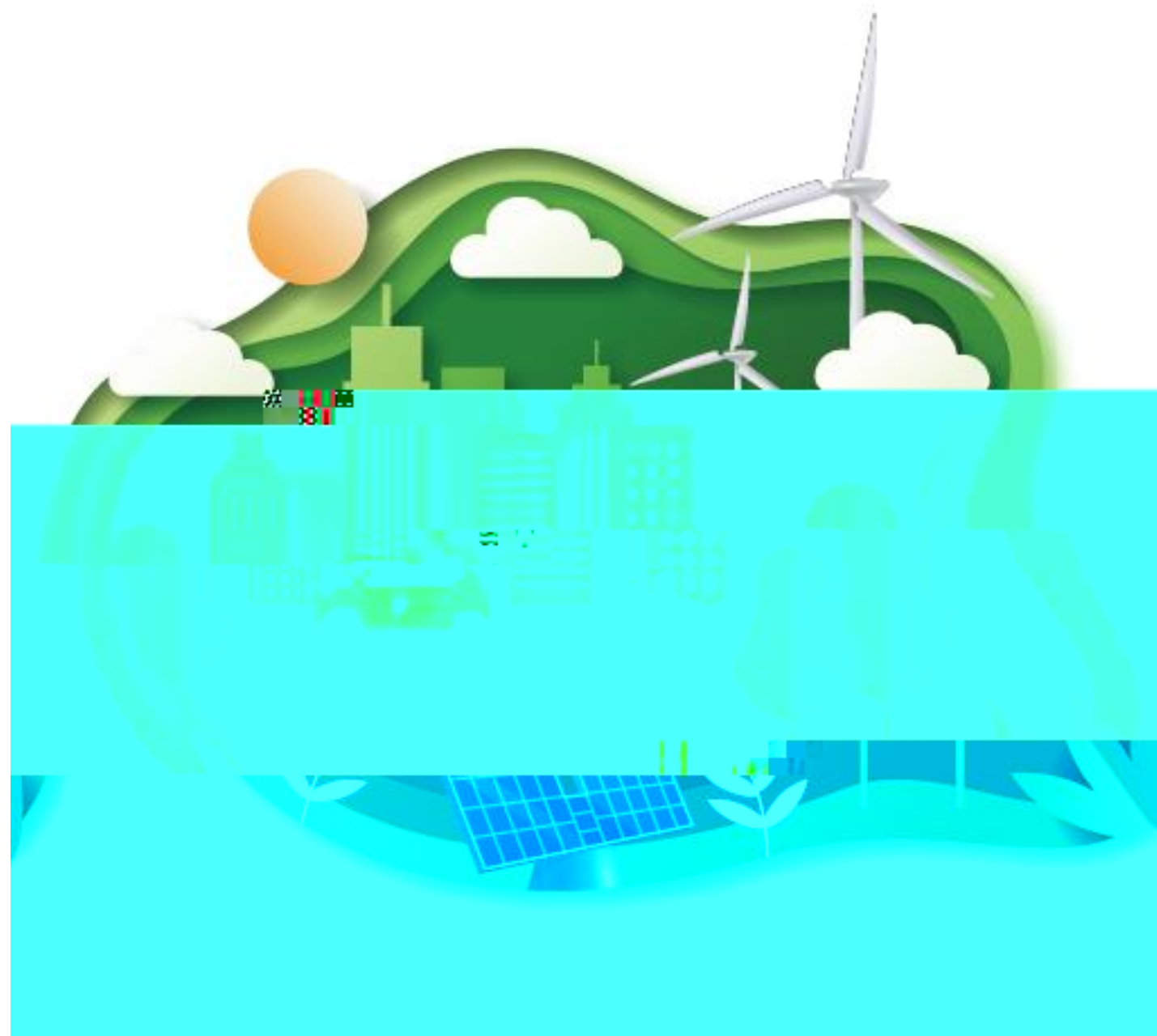


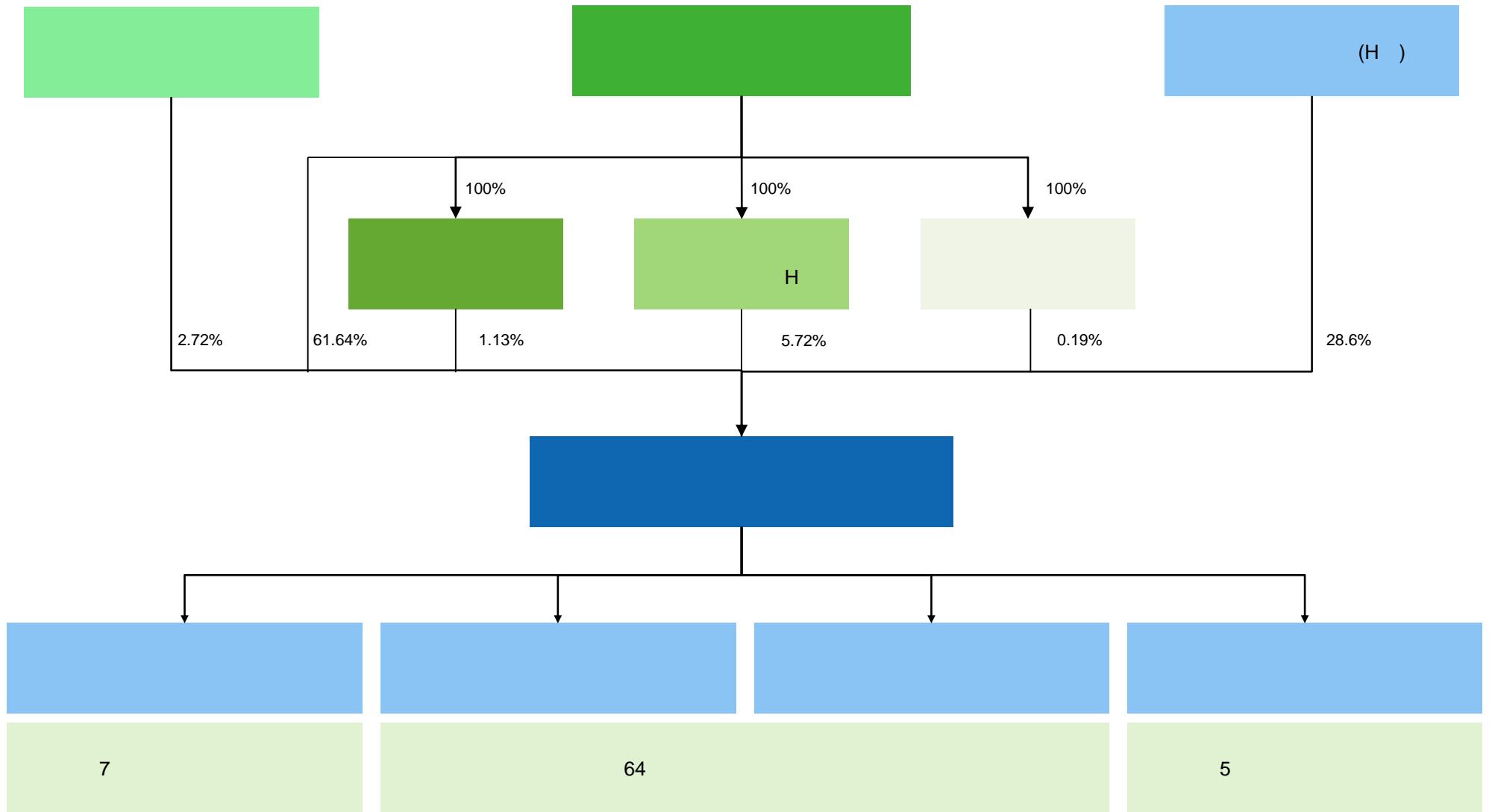


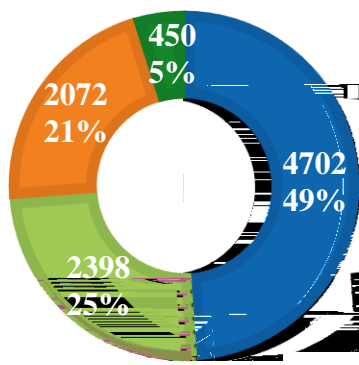
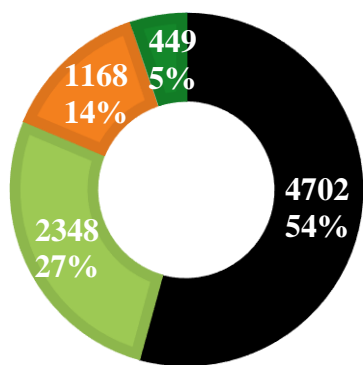




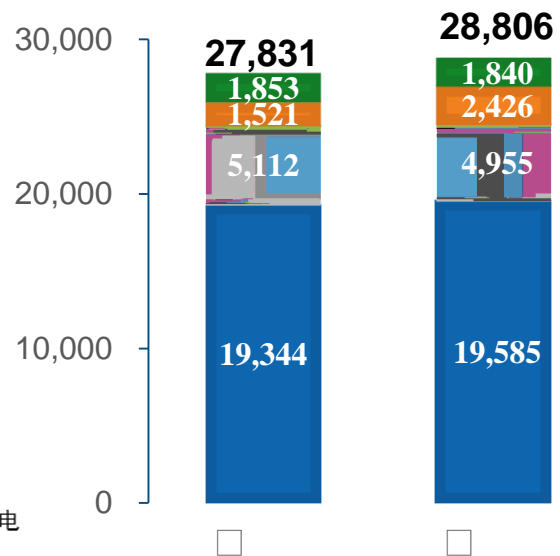


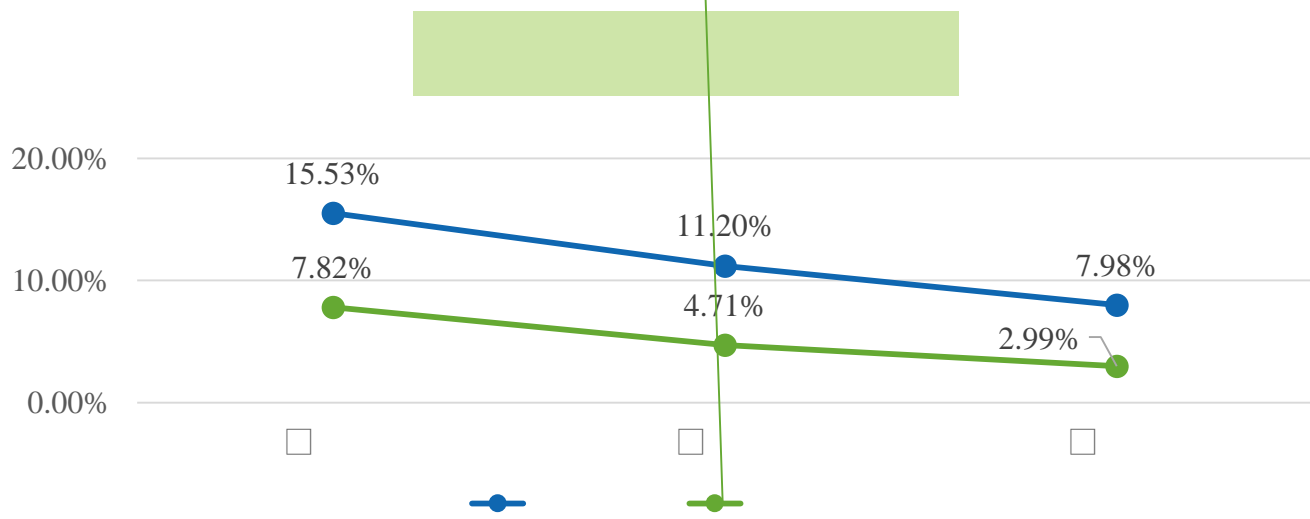
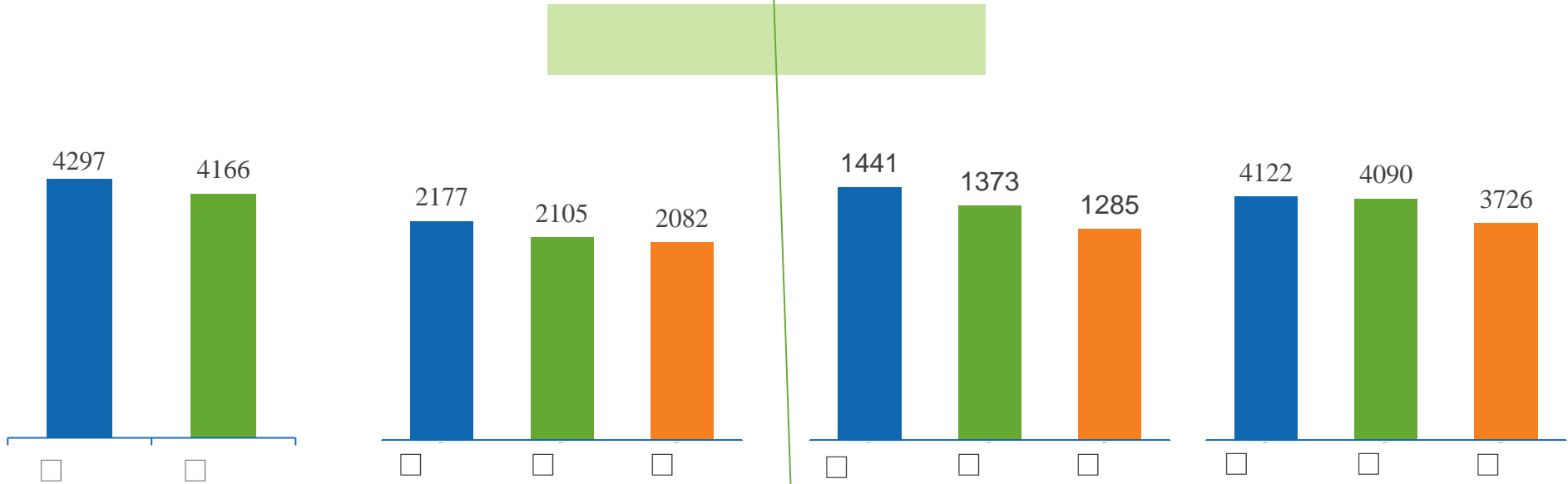






■ 燃气发电及供热 ■ 风力发电
■ 光伏发电 ■ 水力发电

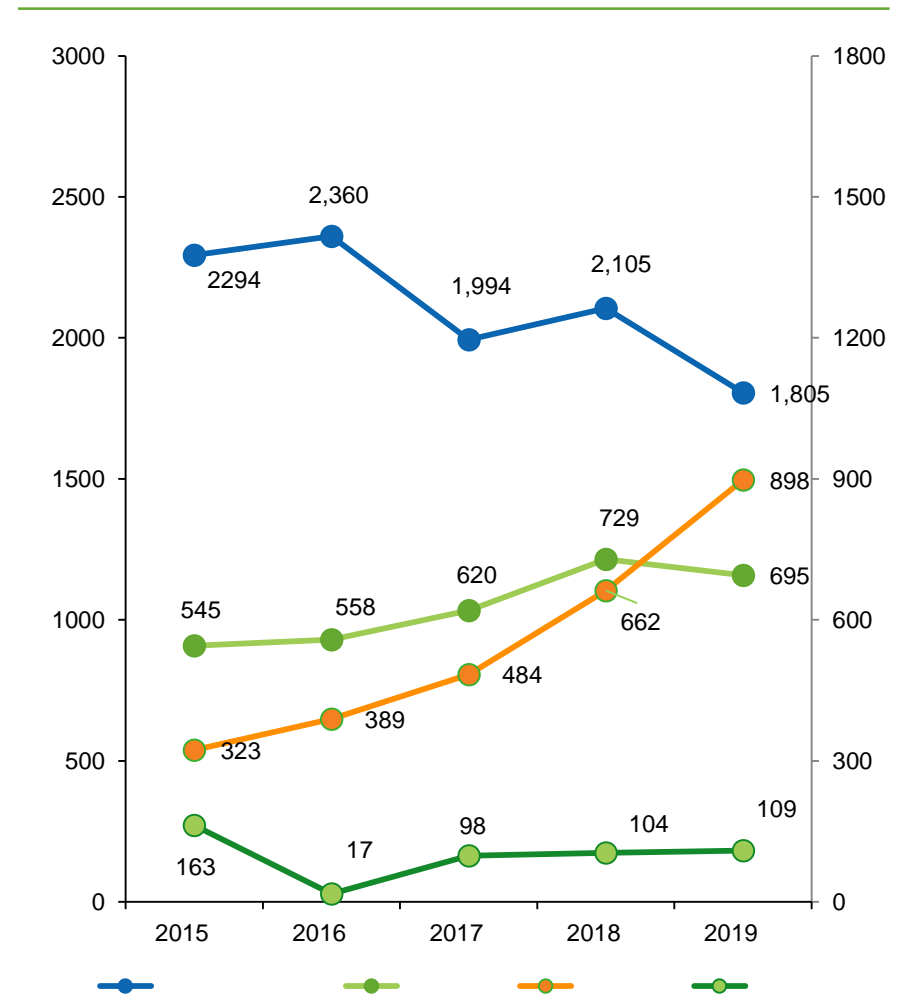


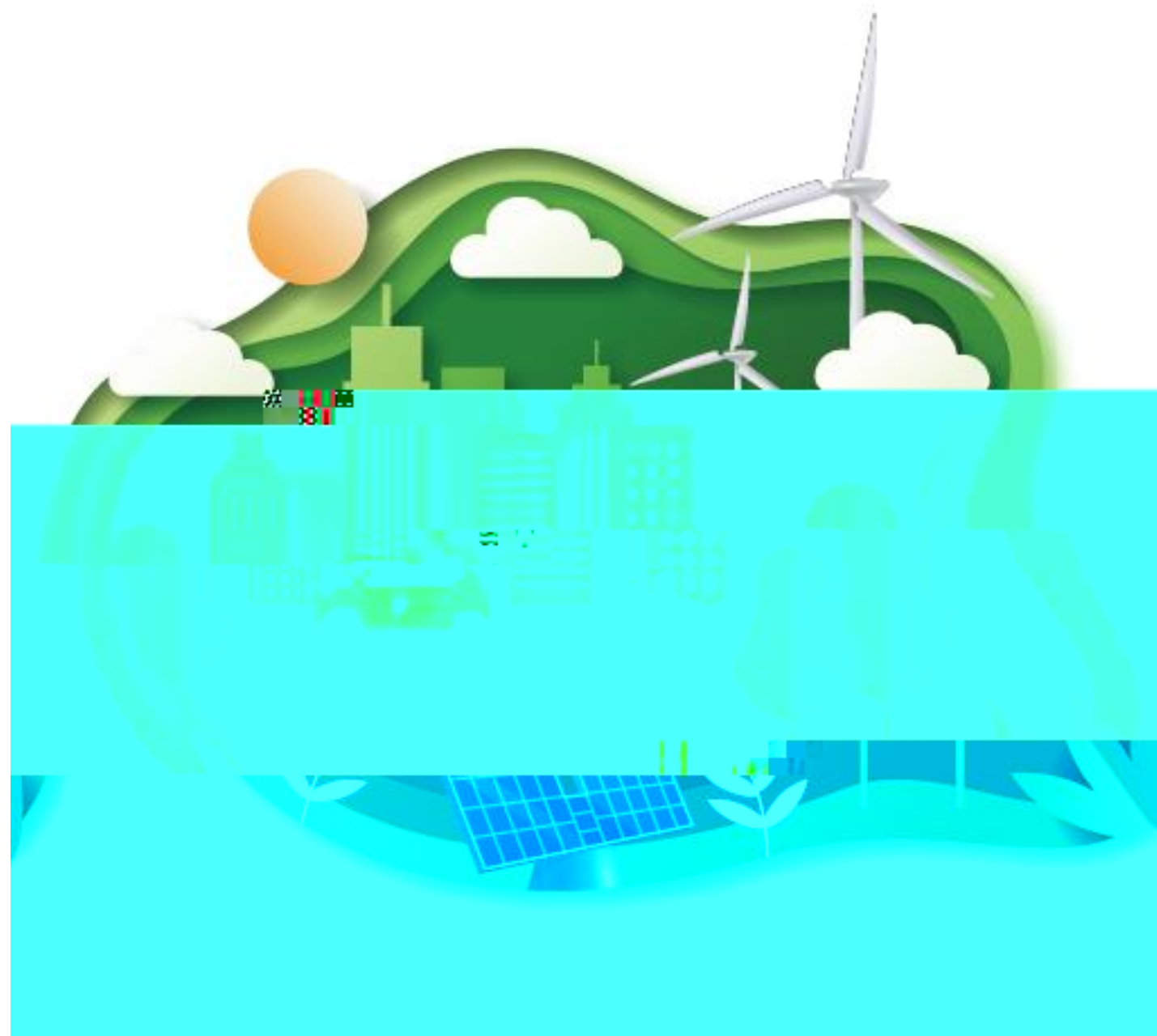




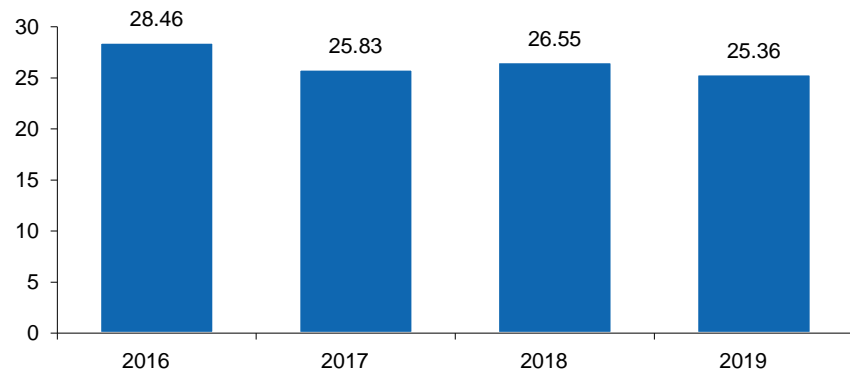




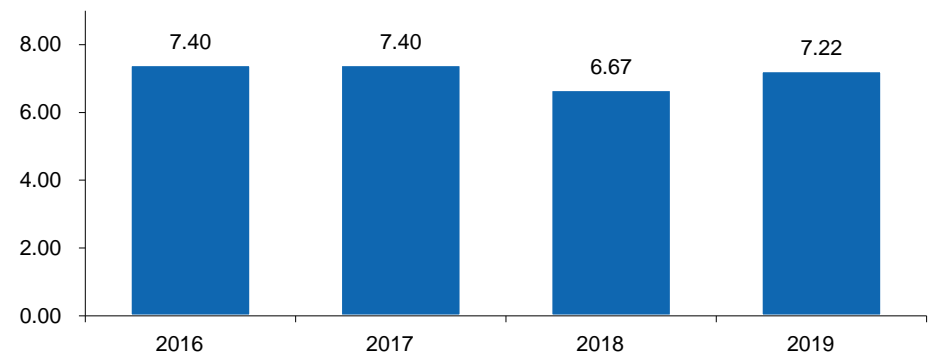


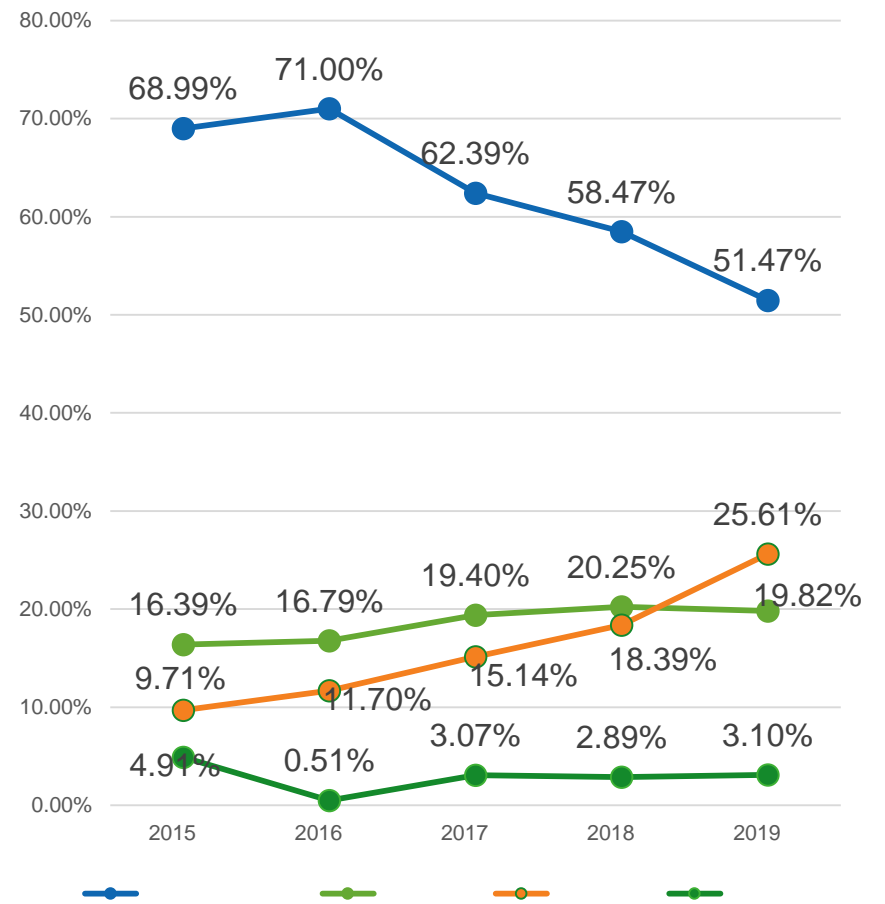
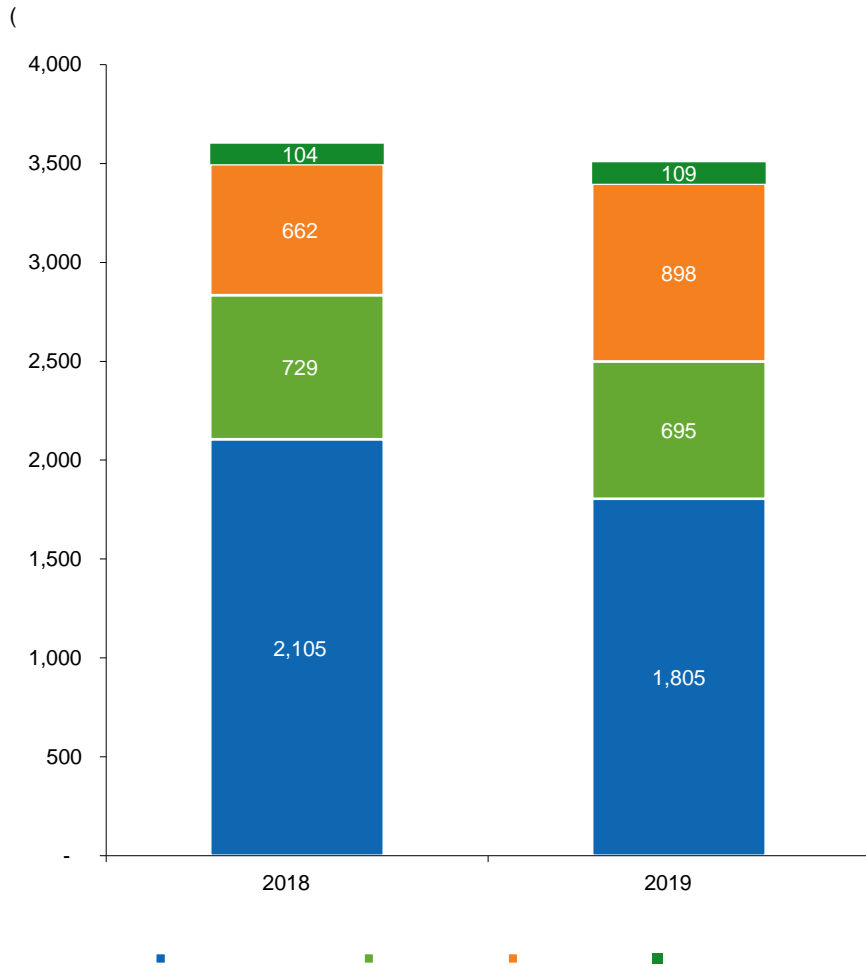


(

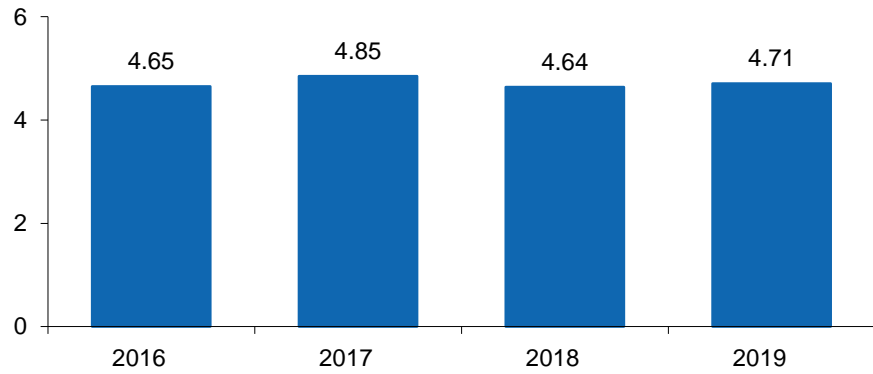


(

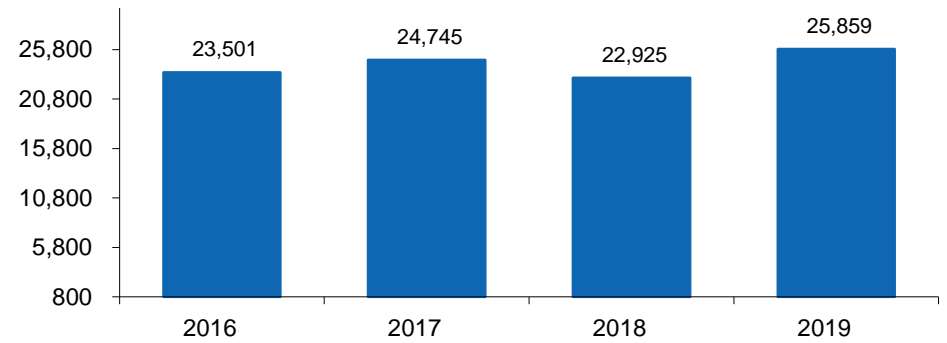




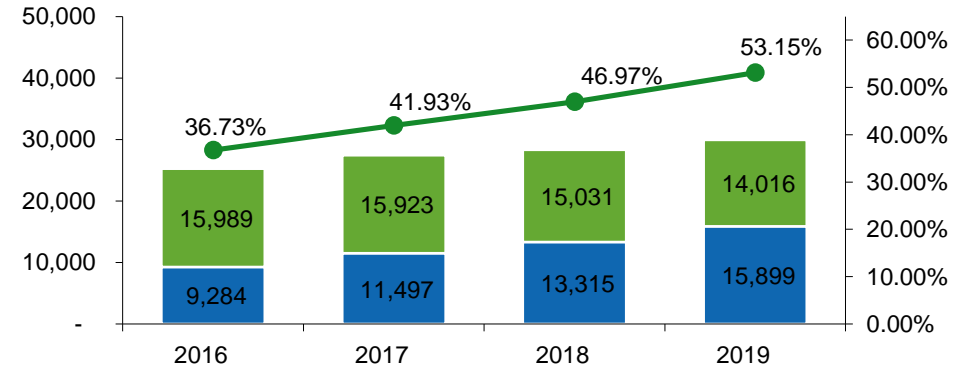
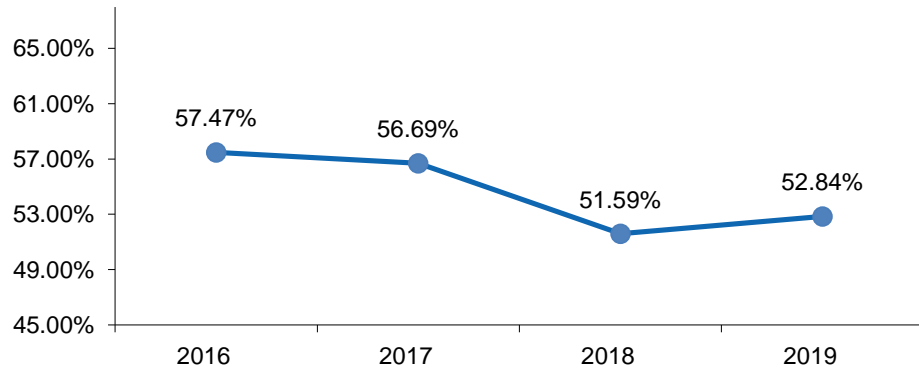
/EBITDA

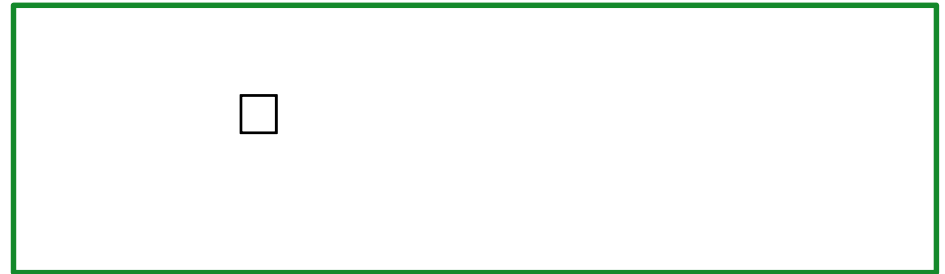
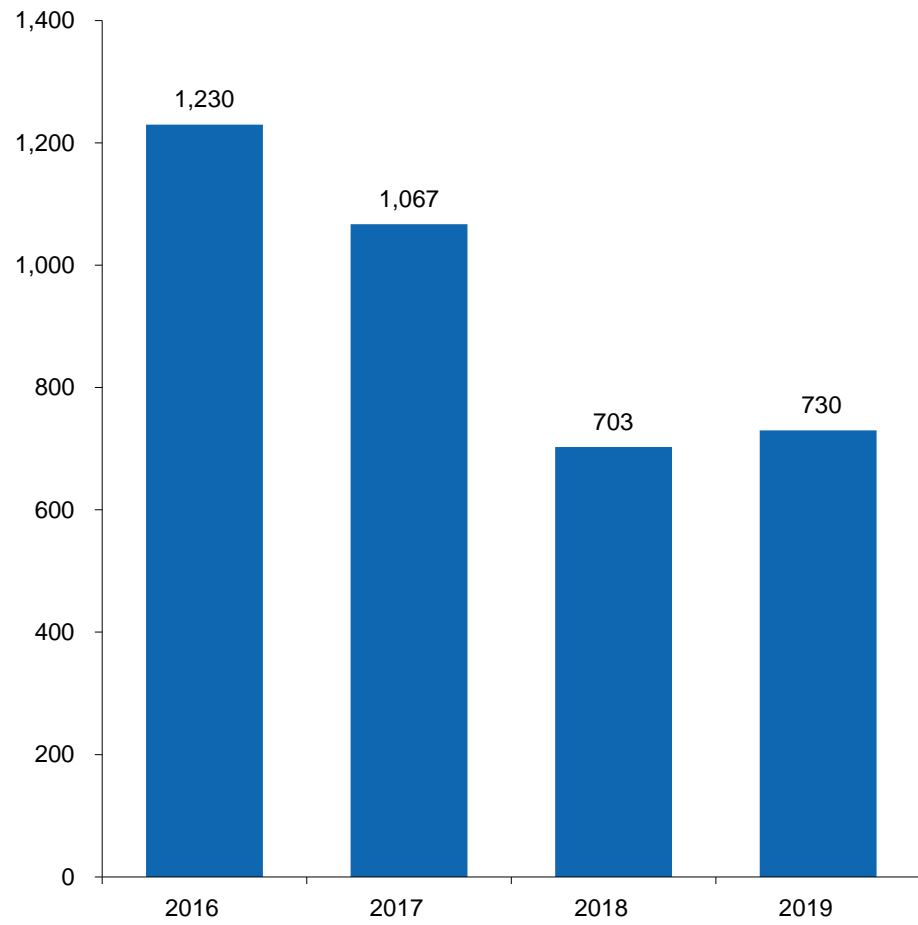


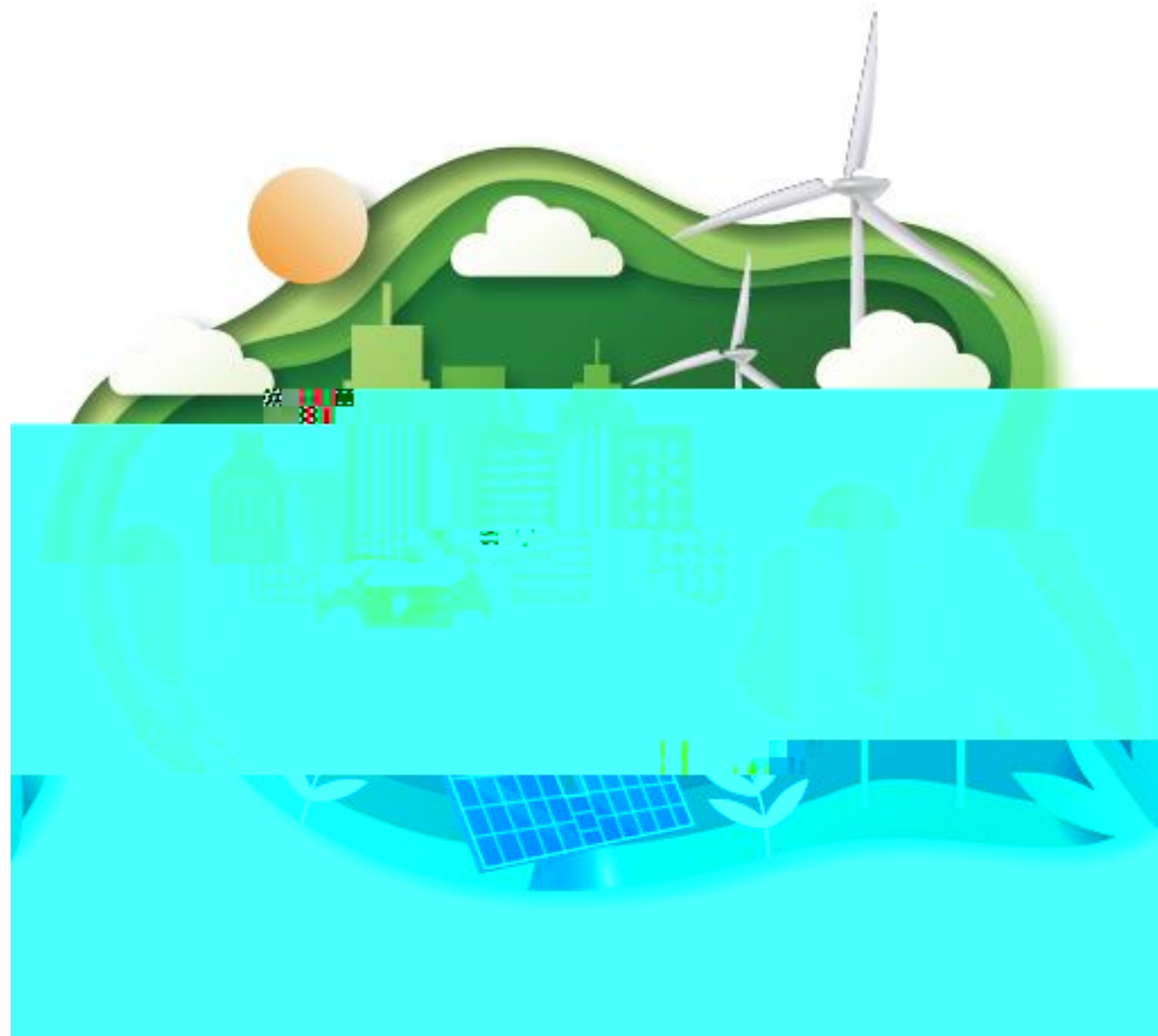
()



(1)



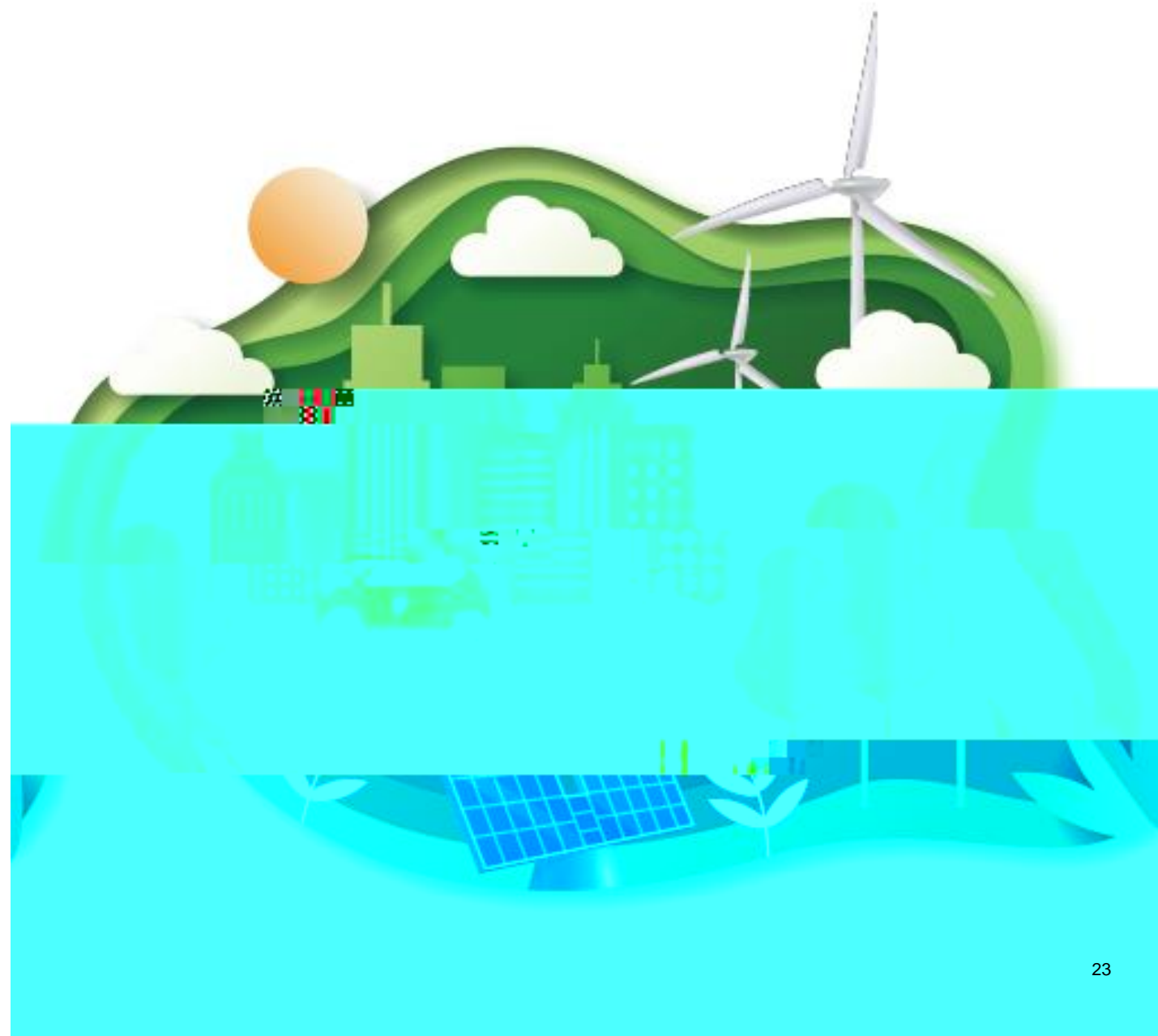






2020

1,500
11,000





()

!		"
"		
		(
		! (





2019	1	3	100
	2	30MW	30
	3	180	180
	4	30MWP	30
	5	20MW	20
	6	20MWp	20
			380
	1	40MWp	40
	2	20MWp	20
	3	20MWp	20
	4	20MWp	20
	5	20MWp	20
	6	40MWp	40
	7	30MWp	30
	8	30MWp	30
	9	40MWp	40
			260



1		100MW	100	23	40MWp	40
2		120MW	120	24	100MW	100
3		30	30	25		300
4		30	30	26	50MWp	50
5			105	27	50MWp	50
6		60	60	28	60MWp	60
7		40	40	29	245MW	245
8		80MWp	80	30		50
9		80MWp	80	31	400MW	400
10		150MWp	150	32	20MWp	20
11		50MWp	50	33	20MWp	20
12		40MWp	40	34	30MWp	30
13	2017	4 100MWp	100	35	40MWp	40
14		50MWp	50	36	500MW	500
15		30MWp	30	37	100MWp	100
16		50MWp	50	38	300MWp	300
17		100MWp	100	39		100
18		100	100	40	50MWp	50
19		20MWp	20	41	50MWp	50
20		40MWp	40	42		1100
21		30MWp	30			5,040
22		30MWp	30			

2020 3

